



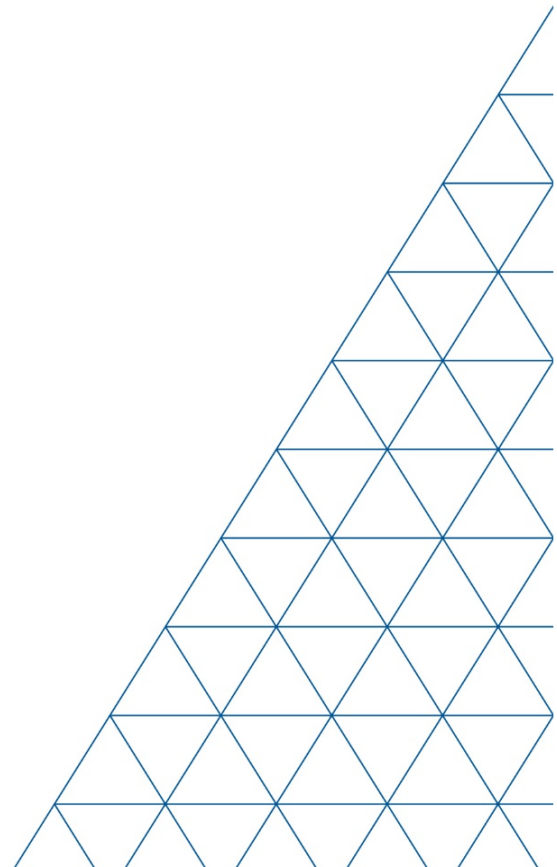
YOUR CONSTRUCTION TECHNOLOGY PROVIDER

Field Reference Guides

EARTHWORKS EXCAVATOR VERISON 2.10

SITECH SOUTHEAST TEXAS

SITECH-SETX.COM



System: Earthworks Excavator

Version: 2.1

Table of Contents

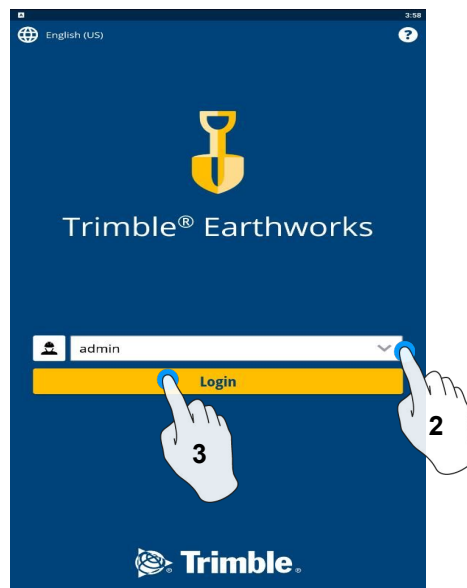
Page #

<input type="checkbox"/> Starting Earthworks	3
<input type="checkbox"/> Dashboard	4
<input type="checkbox"/> Select Project and Design	5
<input type="checkbox"/> Select Project and Design: VCL	6
<input type="checkbox"/> Create New Project	7
<input type="checkbox"/> Work Screen	8
<input type="checkbox"/> Work Screen interface	9
<input type="checkbox"/> Work Screen Setup	10
<input type="checkbox"/> Text Ribbon Setup	12
<input type="checkbox"/> Focus Point	13
<input type="checkbox"/> Import Data with USB	14
<input type="checkbox"/> Export Data with USB	15
<input type="checkbox"/> Cutting Edge Wear and Overcut Protection	16
<input type="checkbox"/> Verify System Accuracy	17
<input type="checkbox"/> Vertical Offset / Memories	18
<input type="checkbox"/> Horizontal Offset	20
<input type="checkbox"/> Cut and Fill Mapping	21
<input type="checkbox"/> Record Point	22
<input type="checkbox"/> Delete / Edit Point	23
<input type="checkbox"/> Navigate to Point	24
<input type="checkbox"/> 3D Line Guidance	25
<input type="checkbox"/> Lane Guidance	26
<input type="checkbox"/> Surface Manager	27
<input type="checkbox"/> Linework Manager	28
<input type="checkbox"/> UTS Setup	29
<input type="checkbox"/> Change Radio Network	31
<input type="checkbox"/> Level Surface	32
<input type="checkbox"/> Sloping Surface	33

Starting Earthworks



1. Touch Touch EarthWorks



2. Select Operator
3. Enter Password if required and touch Login

SITECH TECHNOLOGY DEALER Field Reference Guides

Dashboard



Machine Setup

Guidance

- Position Source
- Correction Source

Attachments

- Attachment Name

System status

- Status of Devices
- Component warnings

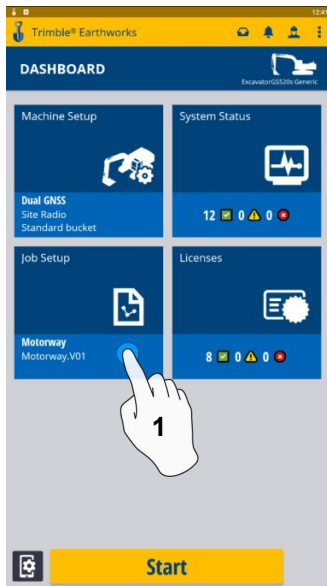
Licenses

- EC520 License
- TD520 License
- GNSS Receiver Licenses

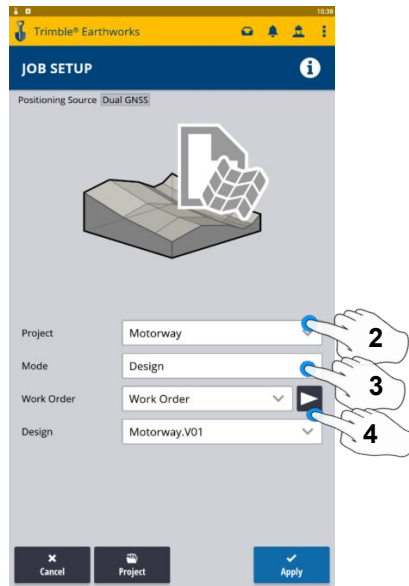
Job Setup

- Select or Create project
- Select or Create Design
- Select or Create new Work Order
- Select Mode Depth n Slope, Design, Infield

Select Project, Design and Work Order



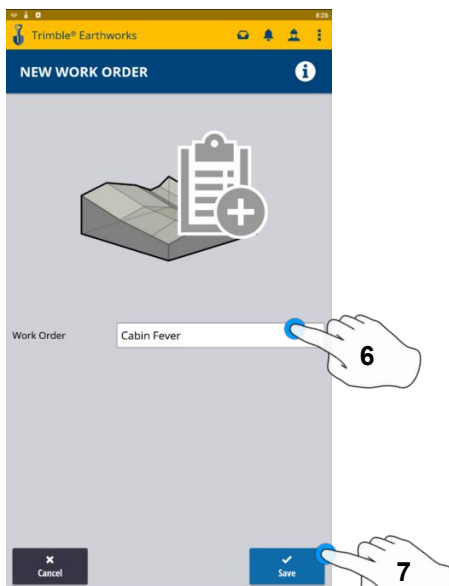
1. Touch Job Setup



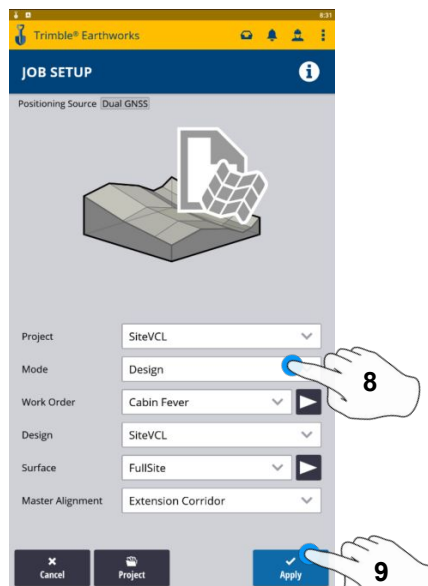
2. Touch project
3. Touch Mode
4. Work Order (Create New)



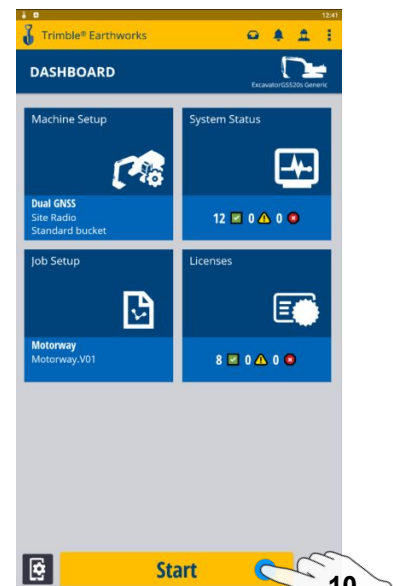
5. Add Work Order



6. Type New Work Order Name
7. Touch Save



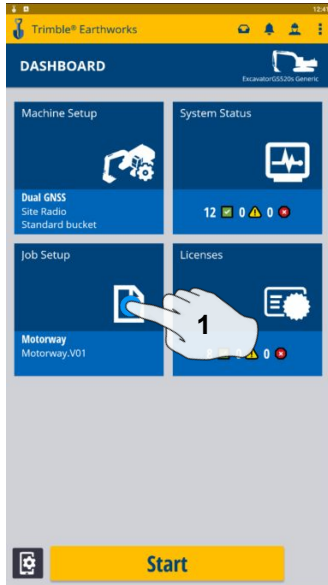
8. Touch Design
9. Touch Apply



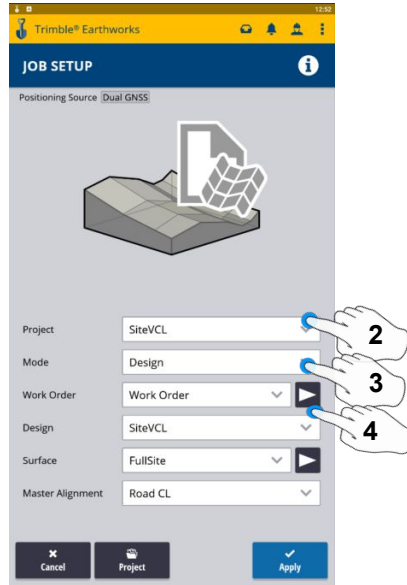
10. Touch Start

SITECH TECHNOLOGY DEALER Field Reference Guides

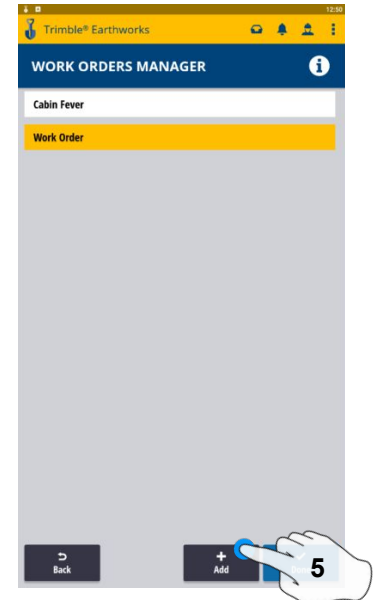
Select Project, Design and Work Order: VCL



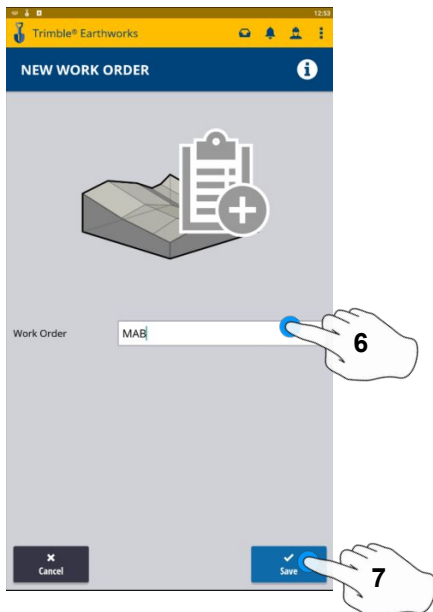
1. Touch Job Setup



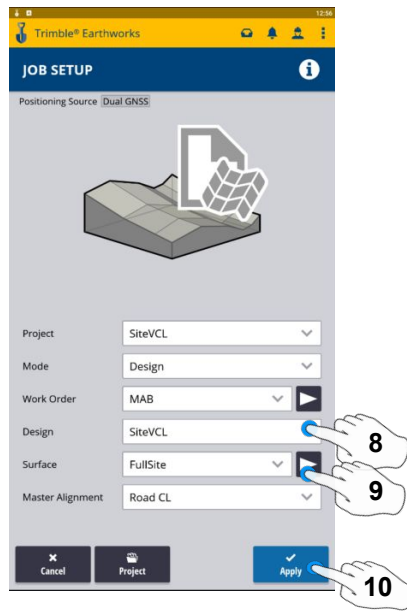
2. Touch Project- Select Project
3. Touch Mode- Select Design
4. Touch Work Order



5. Add Work Order



6. Type New Work Order Name
7. Touch Save



8. Touch Design- Select Design that Contains a VCL
9. Touch Surface- Select Surface
10. Touch Apply



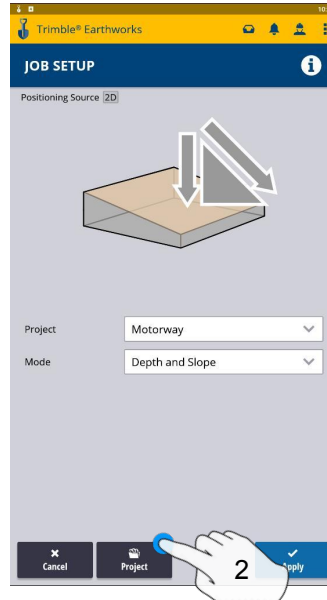
11. Touch Master Alignment
Select Alignment
12. Touch Apply
13. Touch Start

SITECH TECHNOLOGY DEALER Field Reference Guides

Create New Project



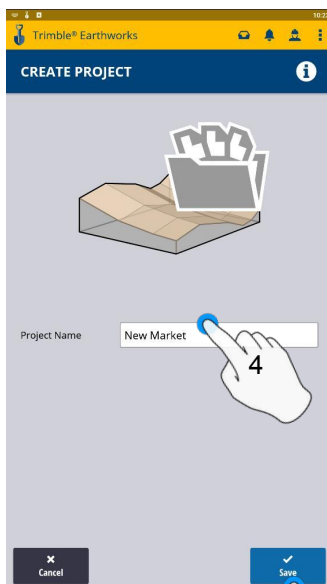
1. Touch Job Setup



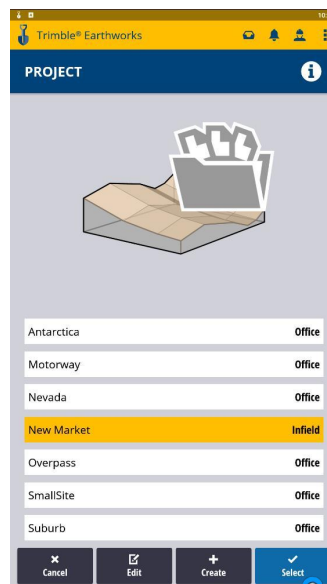
2. Touch Project



3. Touch Create



4. Enter Project Name
5. Touch Save



6. Touch Select

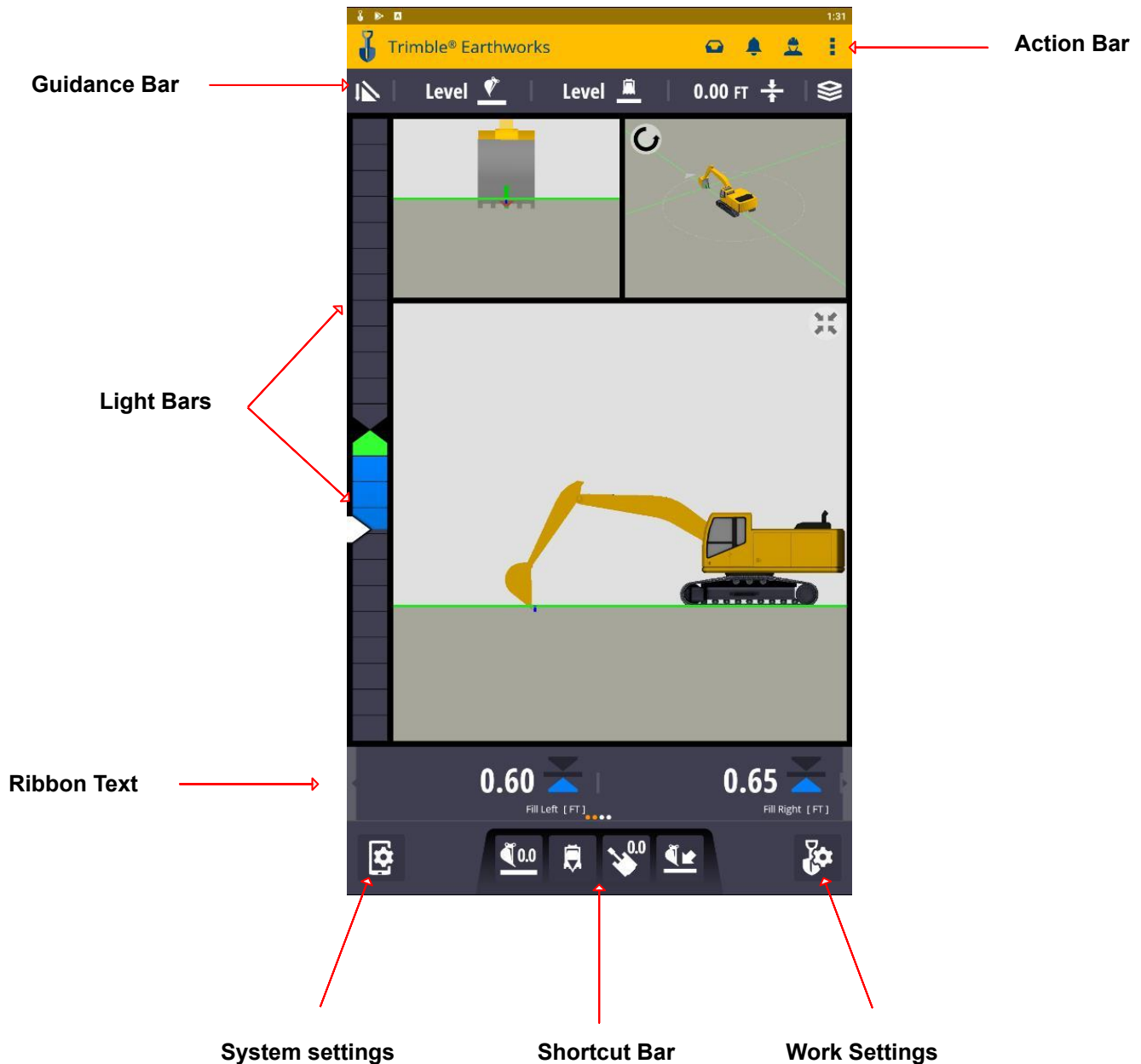


7. Touch Apply

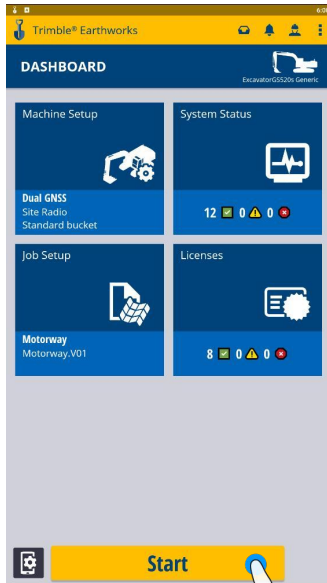


8. Touch Start

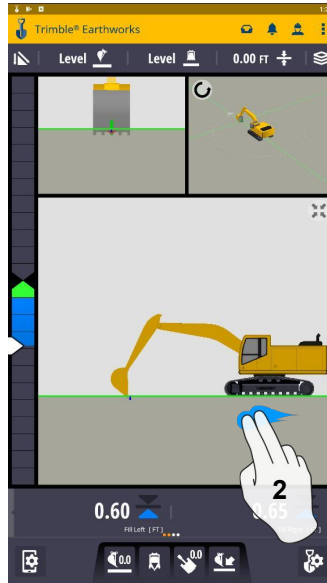
Work Screen



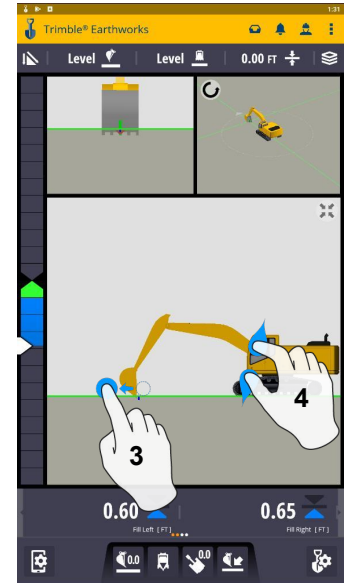
Work Screen Interface



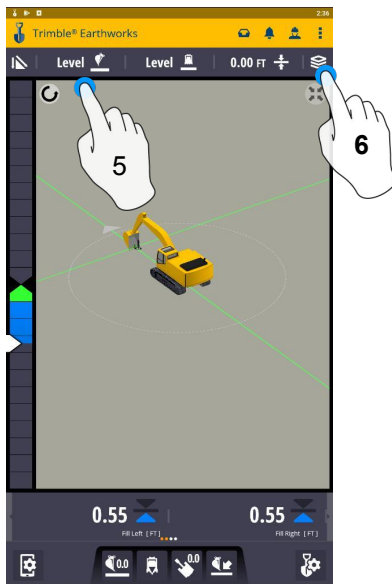
1. Touch to Start



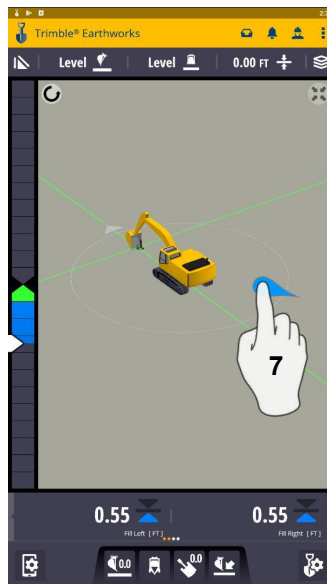
2. 2 Finger Swipe to Change



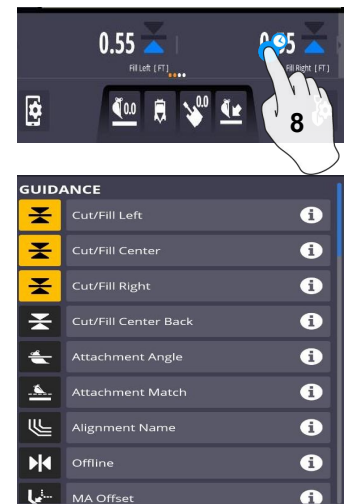
3. Drag to Pan
4. Pinch-Spread to Zoom in-out



5. Touch to select Pan or Rotate
6. Touch to re-center



7. Swipe to change view

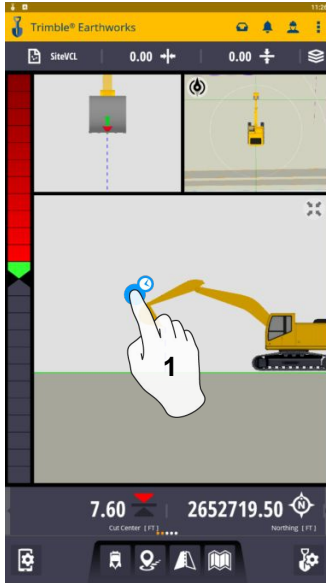


8. Touch and Hold for Setup

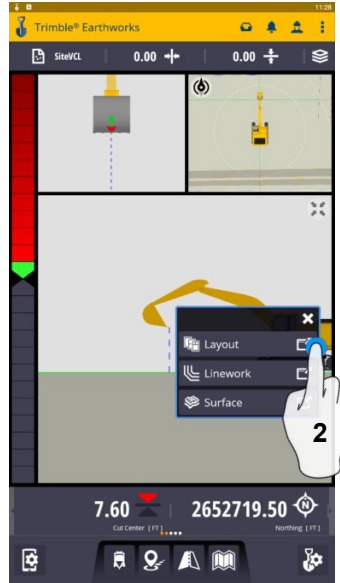
SITECH TECHNOLOGY DEALER

Field Reference Guides

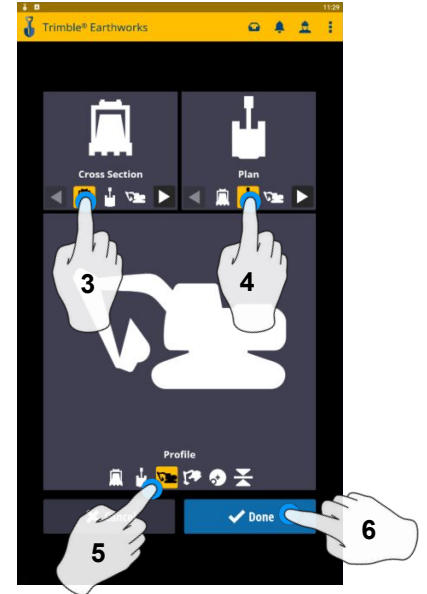
Work Screen Setup



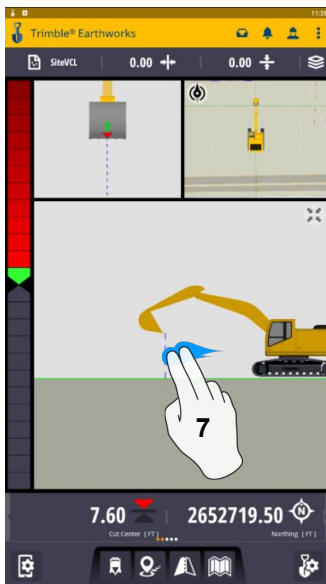
1. Touch and Hold



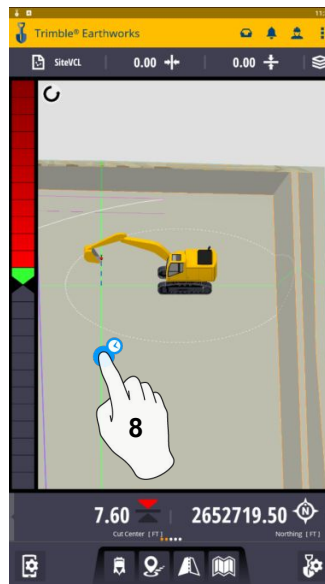
2. Touch Layout



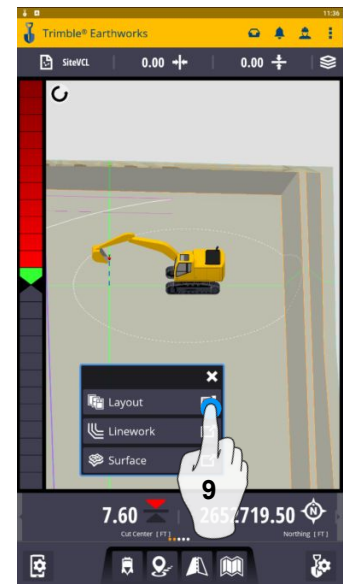
3. Touch Cross Section
4. Touch Plan
5. Touch Profile
6. Touch Done



7. 2 finger swipe to 1
view Screen

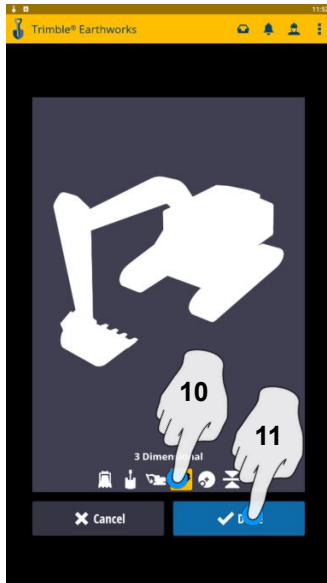


8. Touch and Hold

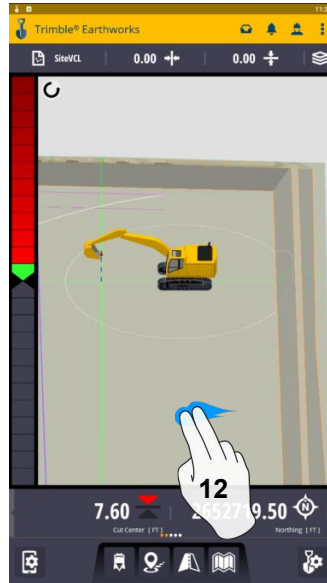


9. Touch Layout

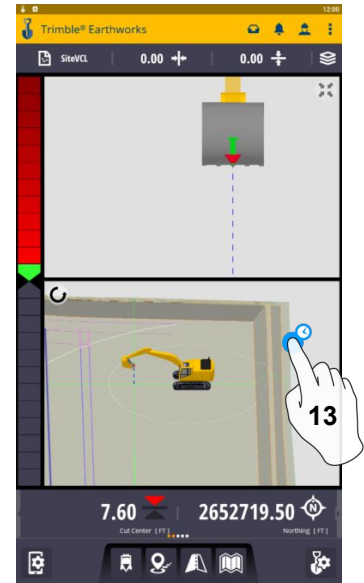
Work Screen Setup: Continued



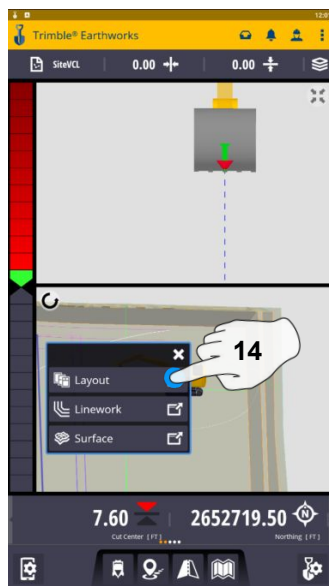
10. Touch 3D View
11. Touch Done



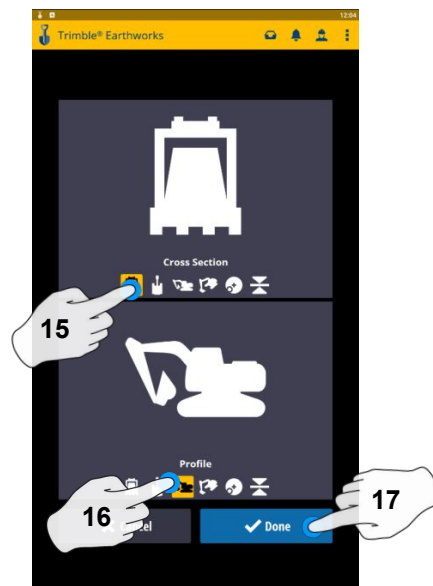
11. 2 Finger swipe to 2 view screen



13. Touch and Hold



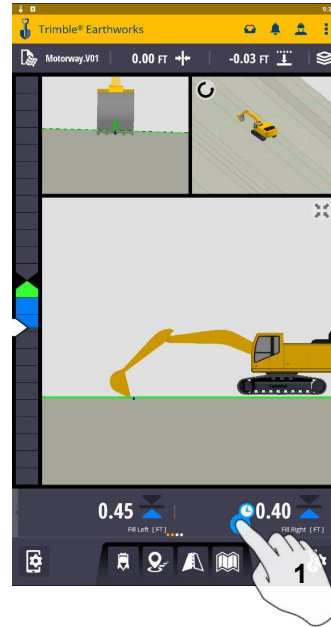
14. Touch Layout



15. Touch Profile
16. Touch Plan
17. Touch Done

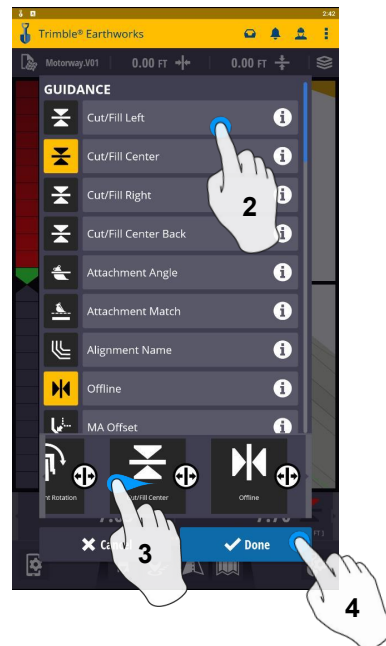
Text Ribbon Setup

1. Touch and Hold Text Ribbon



2. Touch each Text Item

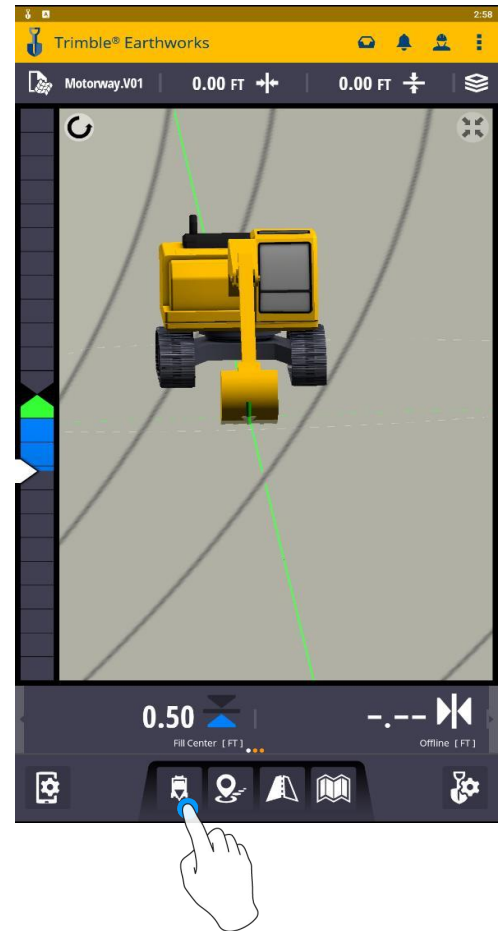
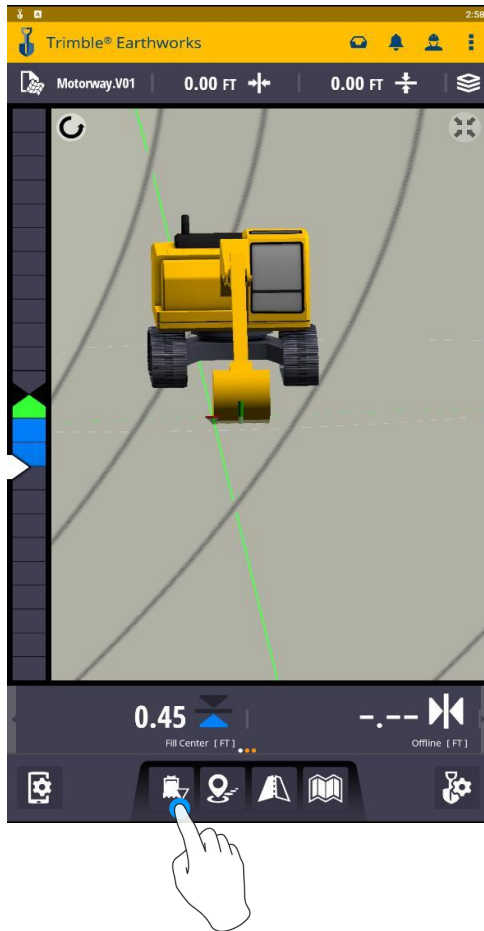
- Cut/Fill Center
- Offline
- Station
- Northing
- Easting
- Elevation
- Design Elevation
- Vertical GNSS Precision
- Satellite Count



3. Touch - Hold - Drag to Change Position

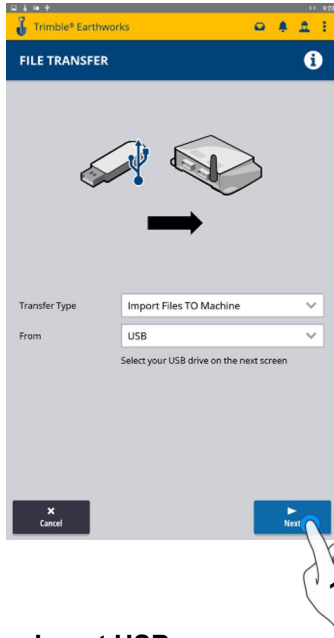
4. Touch Done

Focus Point

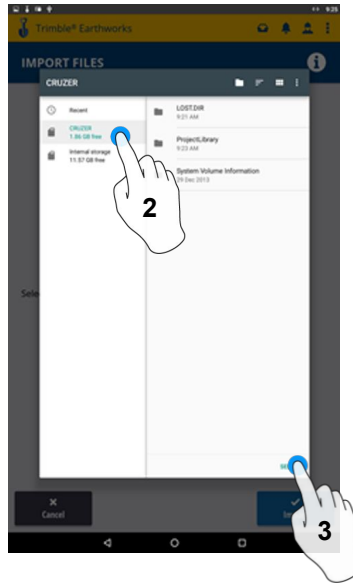


Touch Bucket Focus to Change Focus point

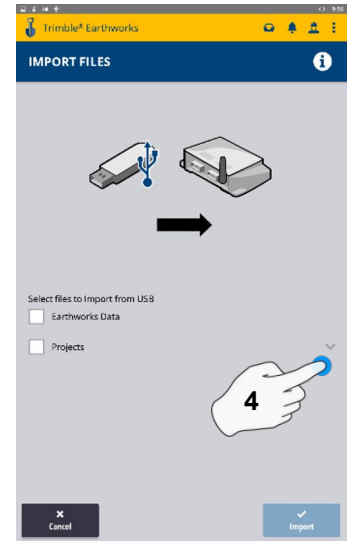
Import Data With USB



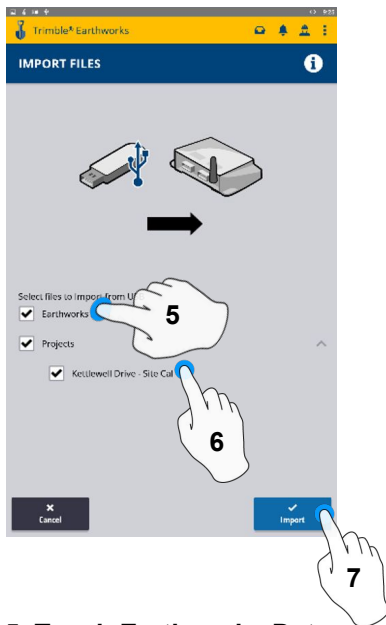
Insert USB
1. Touch Next



2. Touch USB
3. Touch Select



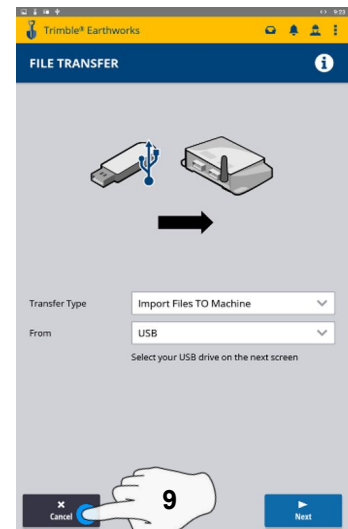
4. Touch “v”



5. Touch Earthworks Data
6. Touch Project
7. Touch Import

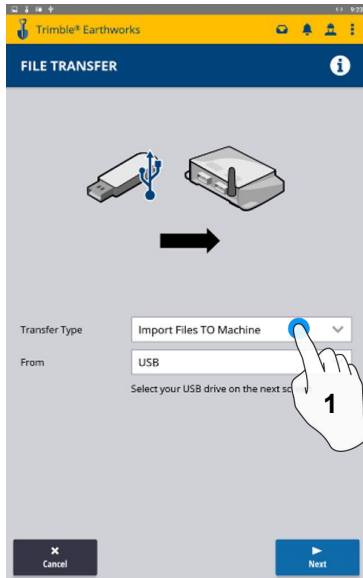


8. Touch OK

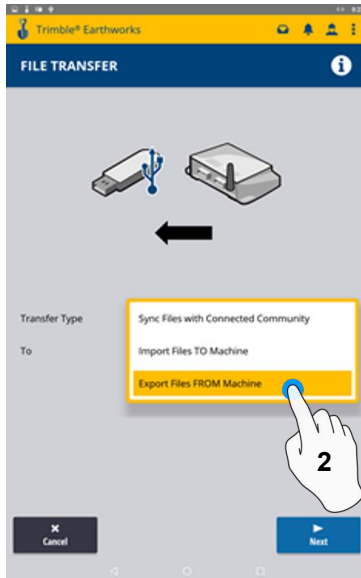


9. Touch Cancel
Remove USB

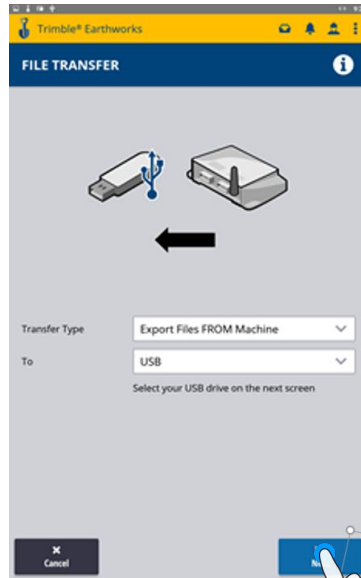
Export Data With USB



Insert USB
1. Touch Transfer Type



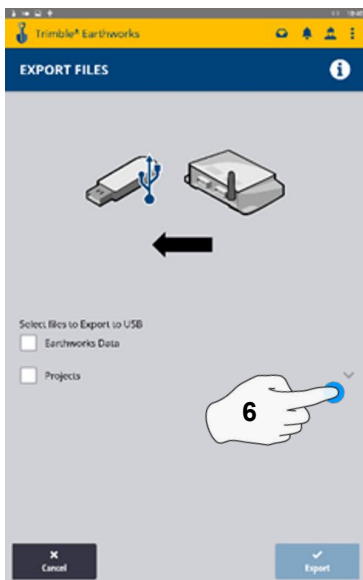
2. Touch Export Files



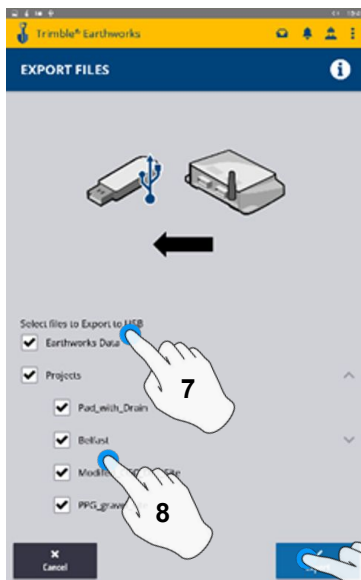
3. Touch Next



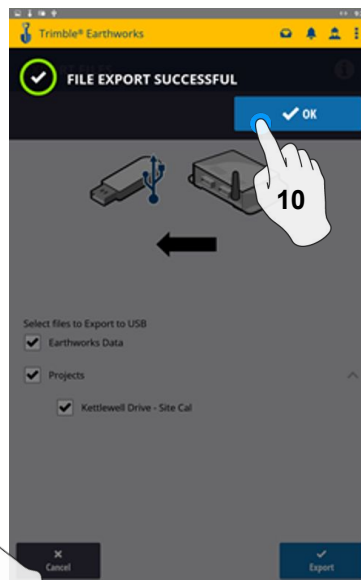
4. Touch USB
5. Touch Select



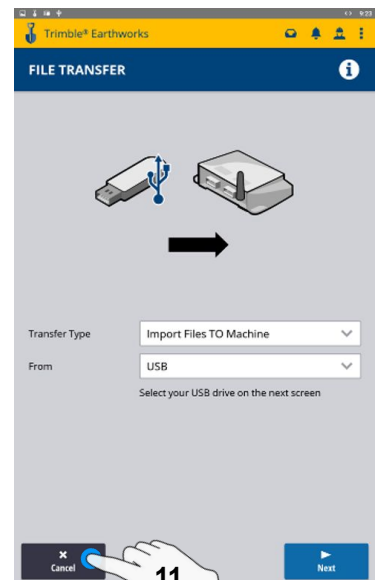
6. Touch "V"



7. Touch Earthworks Data
8. Touch Projects
9. Touch Export

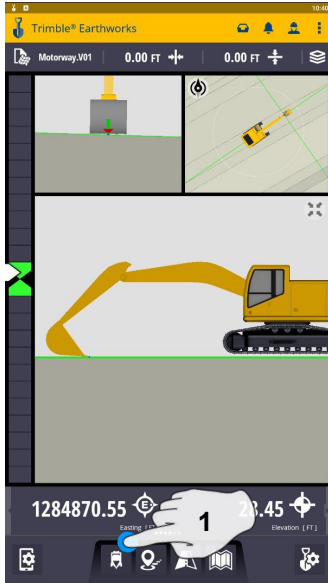


10. Touch OK

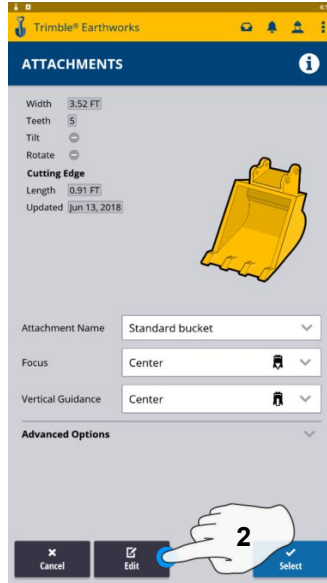


11. Touch Cancel
Remove USB

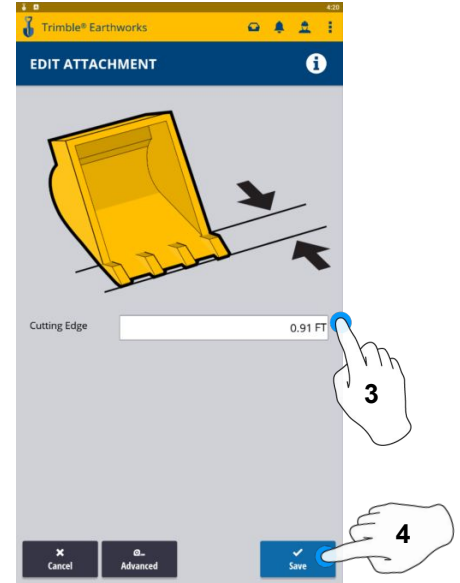
Cutting Edge Wear and Overcut Protection



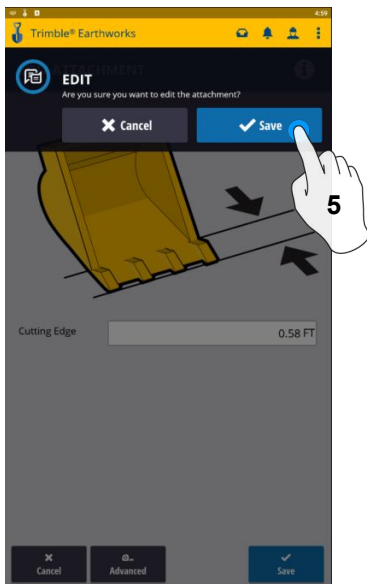
1. Touch and Hold Bucket Focus



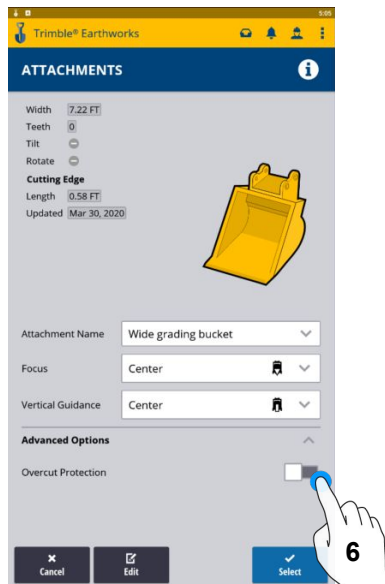
2. Touch Advanced Options



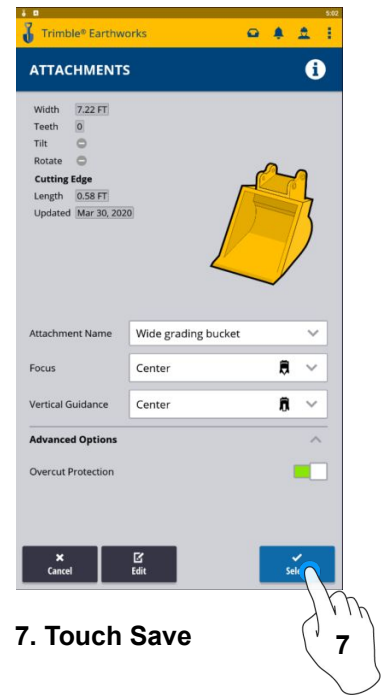
3. Enter Measured Length
4. Touch save



5. Touch Save



6. Touch Overcut protection to
Turn On/Off



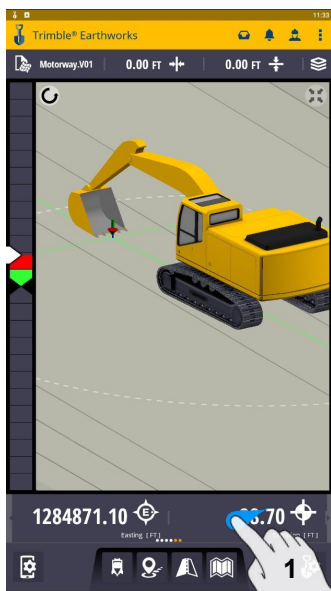
7. Touch Save

Verify System Accuracy

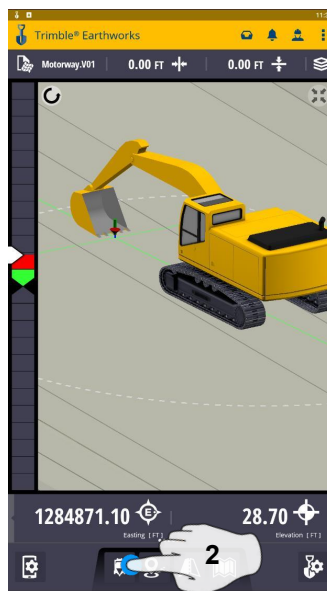
Verify the System accuracy by checking into a Bench Point



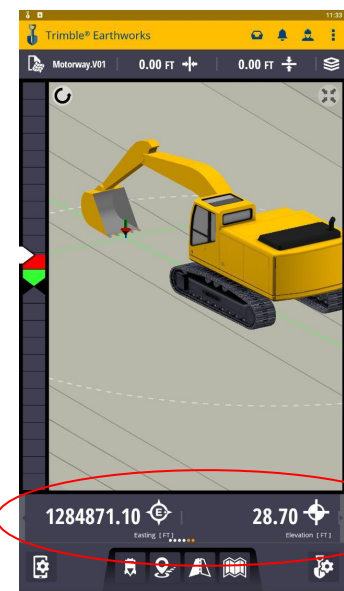
Position the Bucket Tip over the Bench point



**1. Swipe Ribbon to View
Northing, Easting, Elevation**



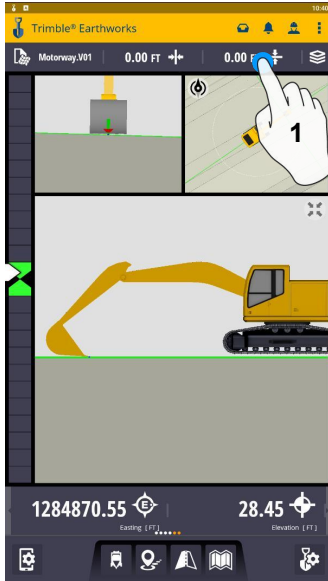
**2. Touch Bucket Focus
Select Point on
Bucket to Measure**



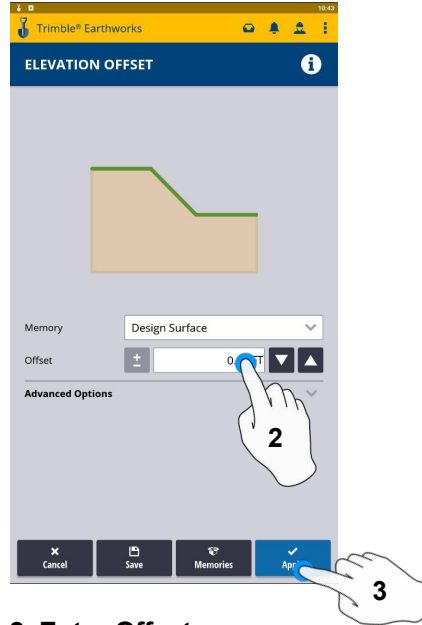
**3. Verify
Northing, Easting, Elevation**

See Supervisor if Northing, Easting, and Elevation do not match Project Tolerances

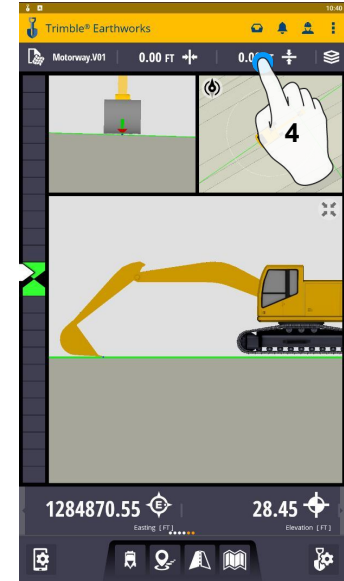
Vertical Offset / Memories



1. Touch and Hold
Vertical Offset



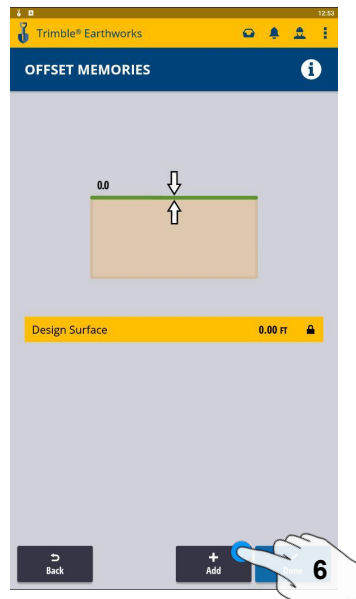
2. Enter Offset
3. Touch Apply to Use Immediately



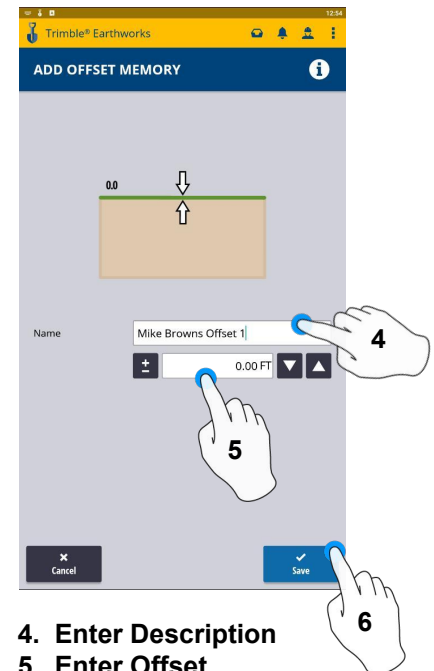
4. Touch and Hold
Vertical Offset



5. Touch Memories

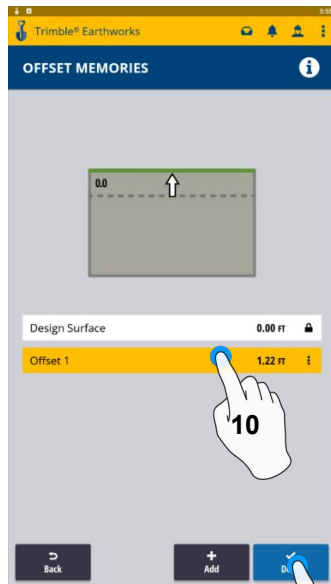


6. Touch Add to
Add New Offset

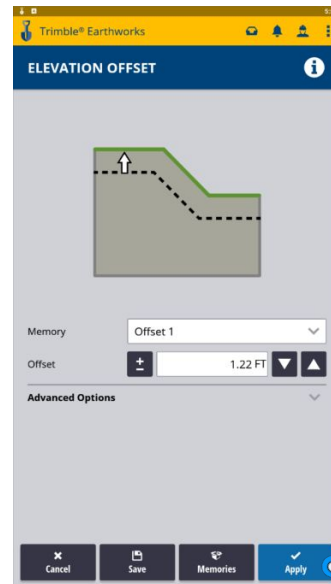


4. Enter Description
5. Enter Offset
6. Touch Save

Vertical Offset / Memories continued

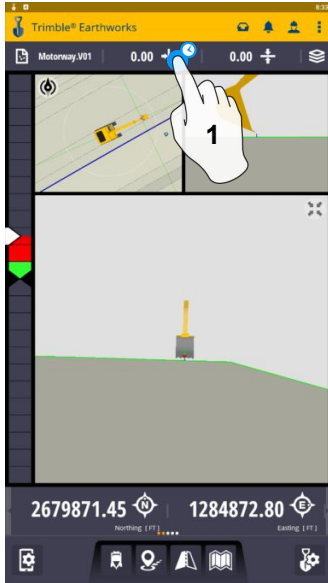


10. Touch Memory
11. Touch Done

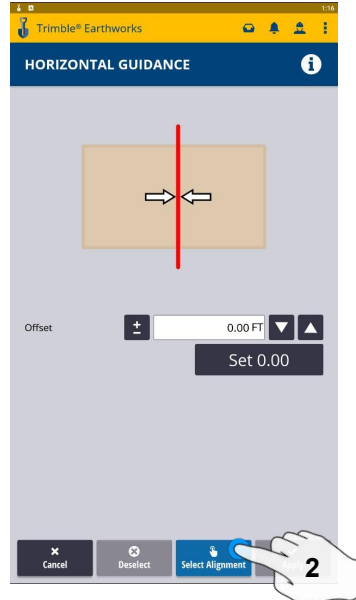


12. Touch Apply

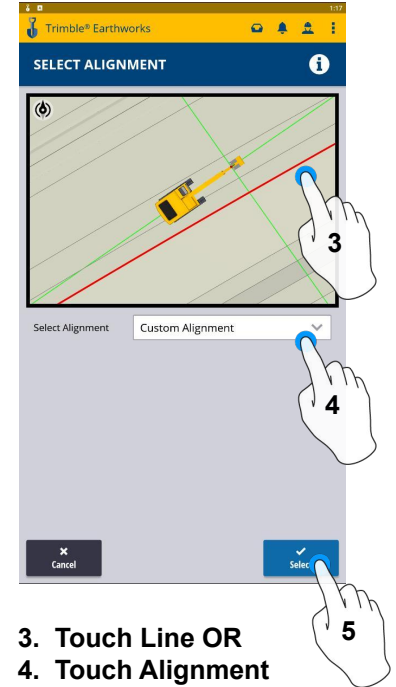
Horizontal Offset



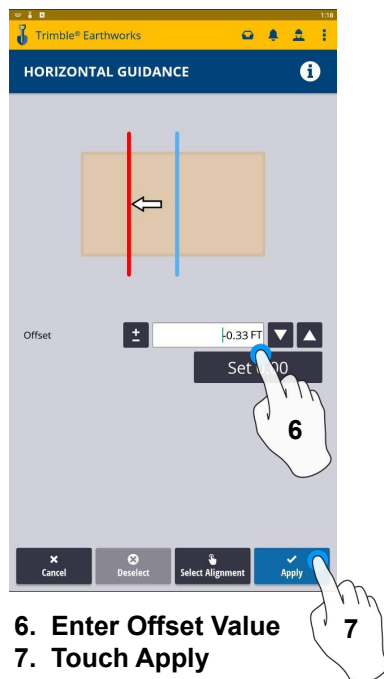
1. Touch and Hold
Horizontal Offset



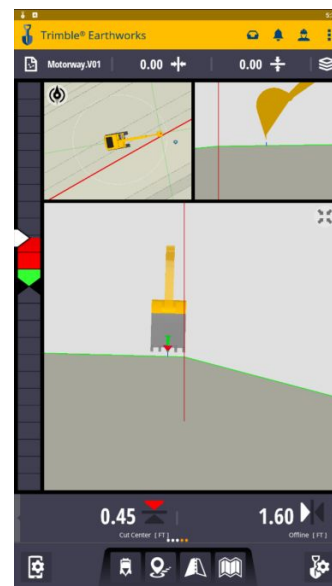
2. Touch Select Alignment



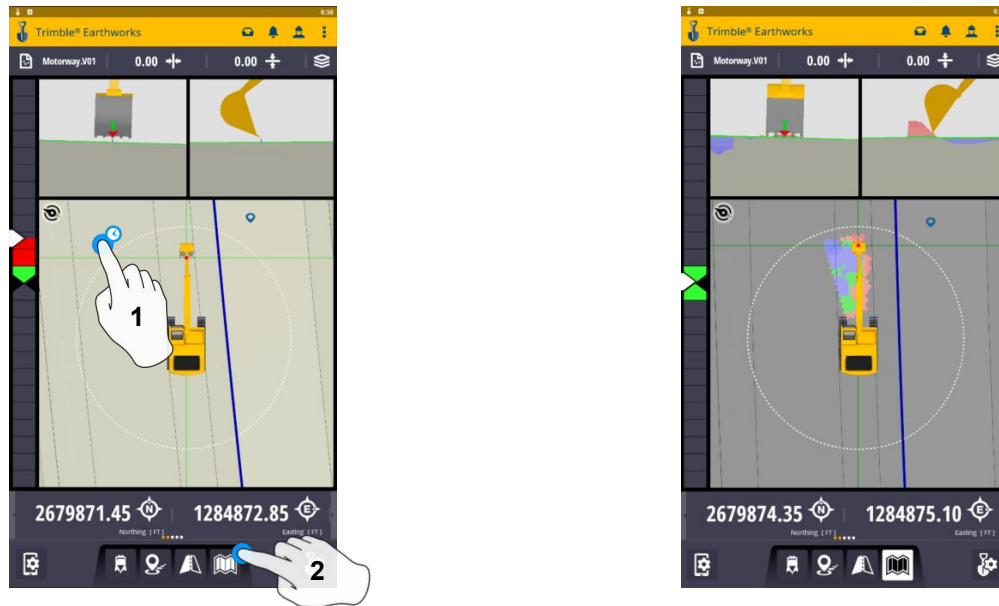
3. Touch Line OR
4. Touch Alignment
5. Touch Select



6. Enter Offset Value
7. Touch Apply



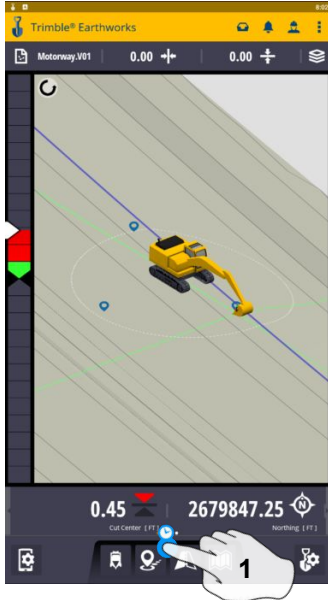
Cut and Fill Mapping



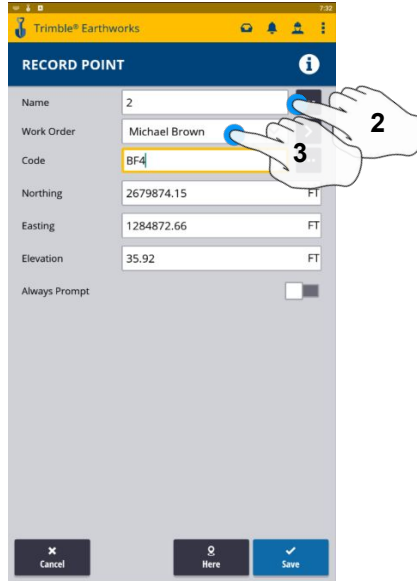
1. Touch and Hold screen to change view
2. Press Mapping Icon to view

****Cut Fill Mapping will only be visible in Plan, Cross section, and Profile views****

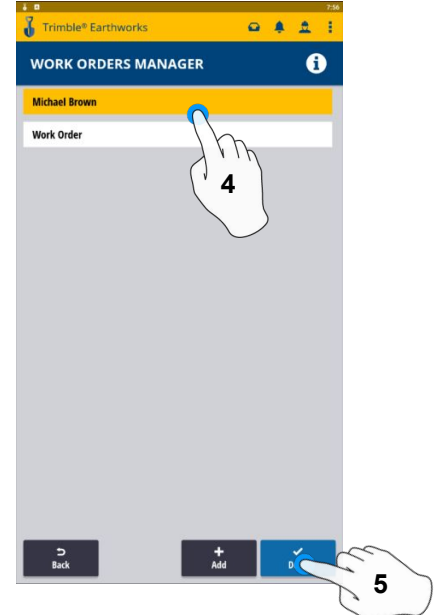
Record Point



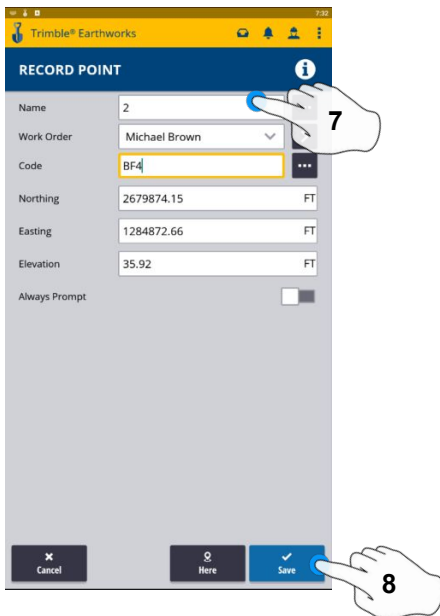
1. Press and Hold Record Point



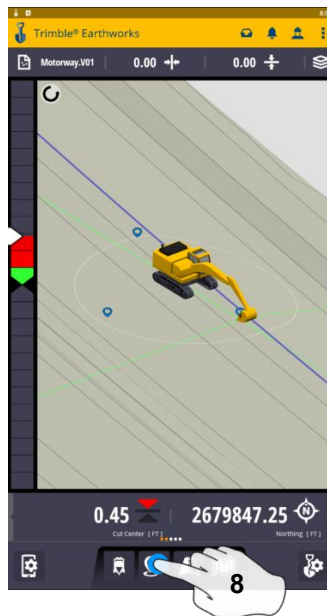
2. Touch to Edit Name
3. Select or create Work Order



4. Select Work order for point location
5. Select done



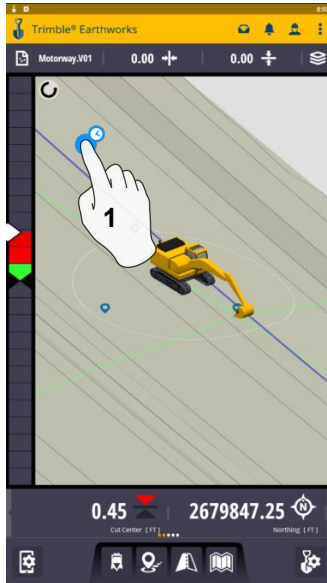
7. Type Code
8. Select Save



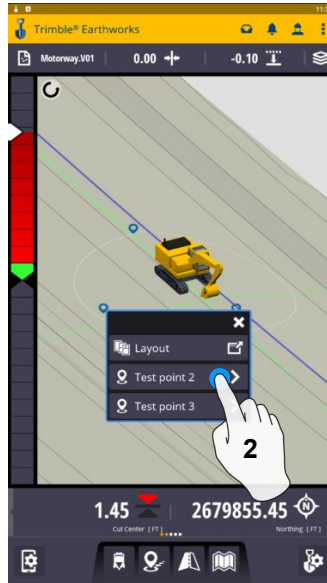
8. Touch Point Icon Records Point

**** Note- After recording a point, it will save automatically in Work Order Created during project setup. ****

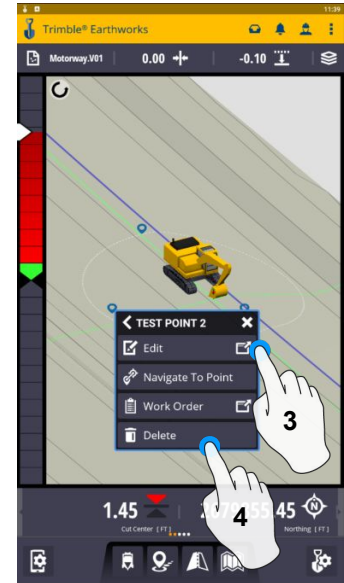
Delete / Edit Point



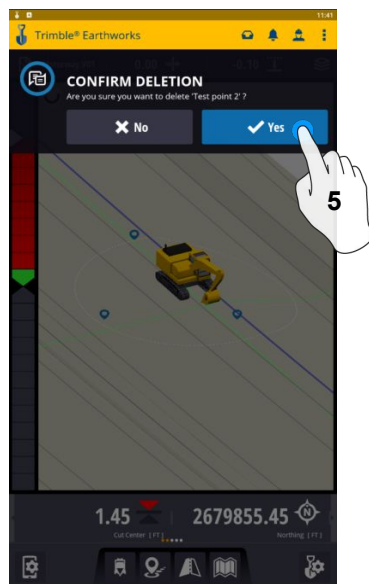
1. Touch and Hold over point



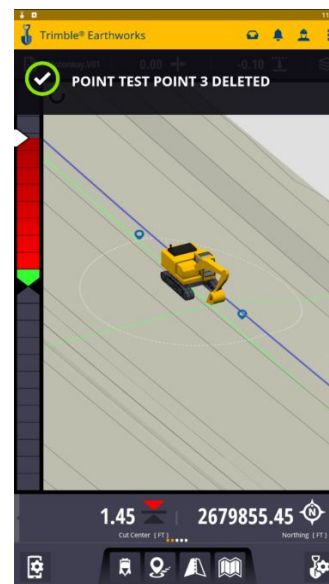
2. Touch point information



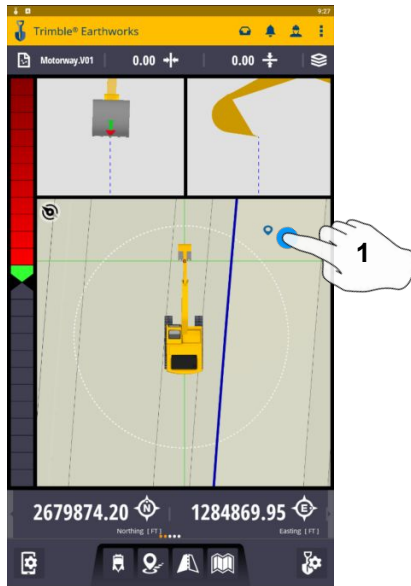
3. Can Edit point information if needed
4. Touch Delete



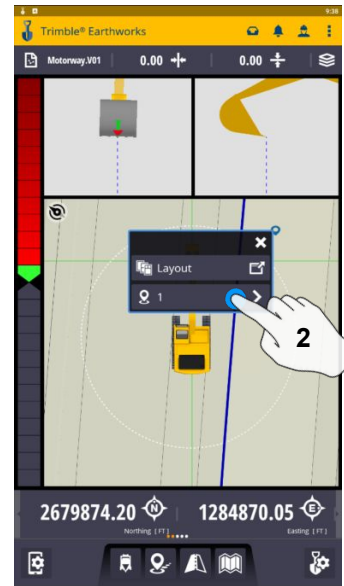
5. Confirm Delete
Once Deleted can no longer view



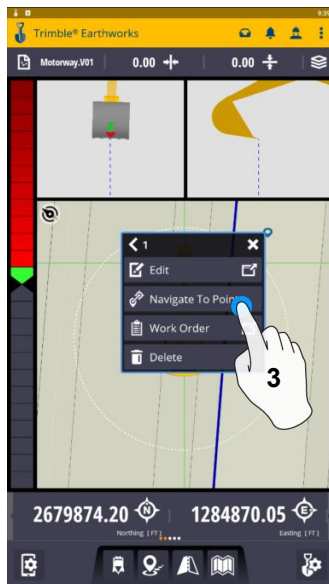
Navigate to Point



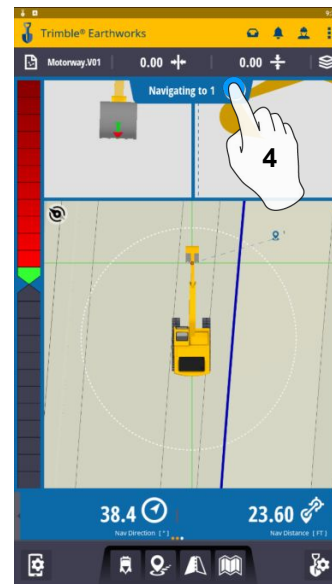
1. Touch and Hold on Point



2. Touch Point info

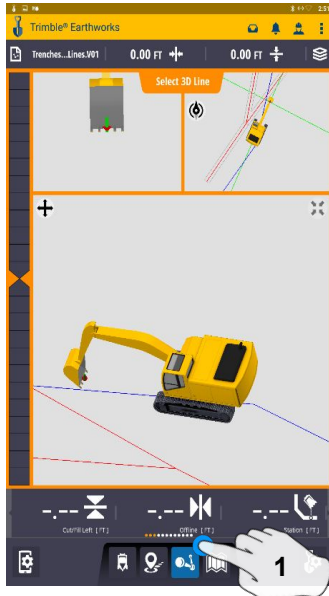


3. Touch Navigate to point

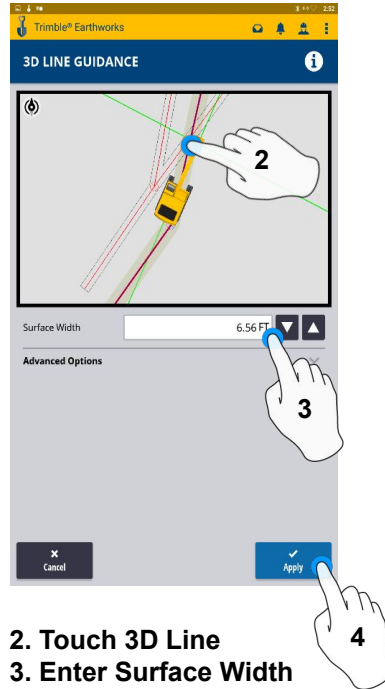


4. Touch Stop Icon once complete

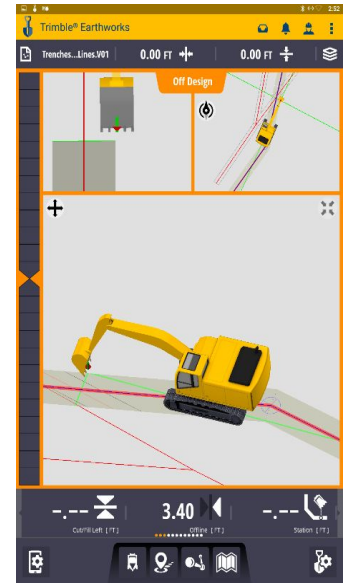
3D Line Guidance



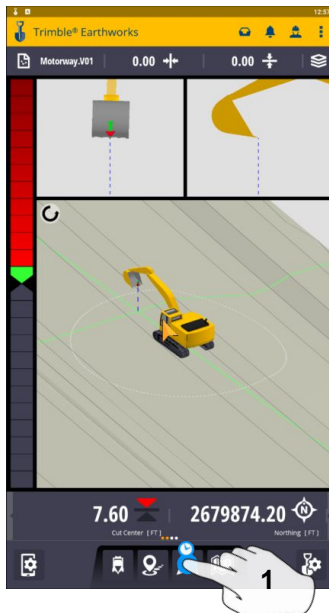
1. Touch 3D Line Select



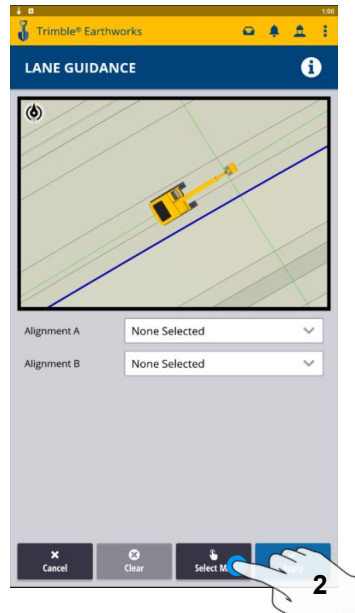
2. Touch 3D Line
3. Enter Surface Width
4. Touch Apply



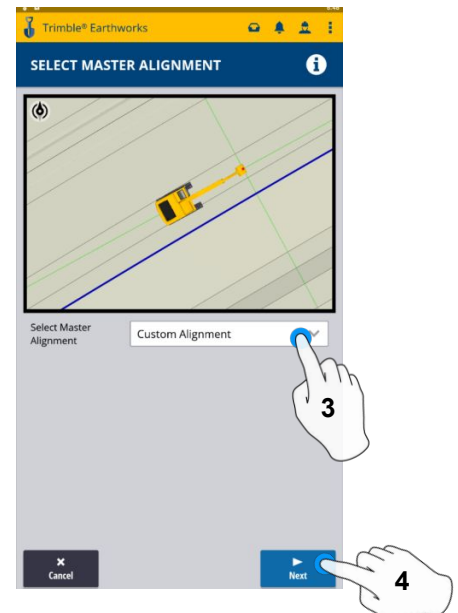
Lane Guidance



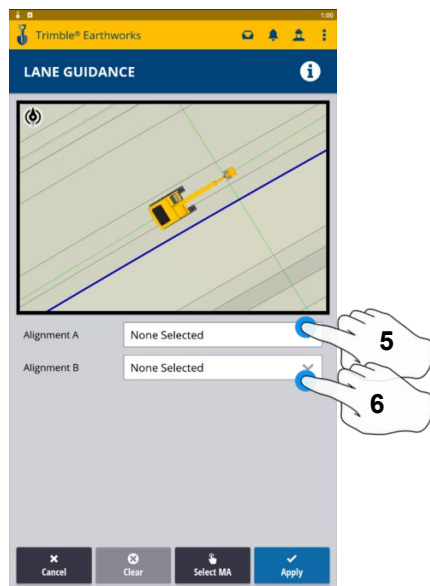
1. Touch and Hold Lane Guidance



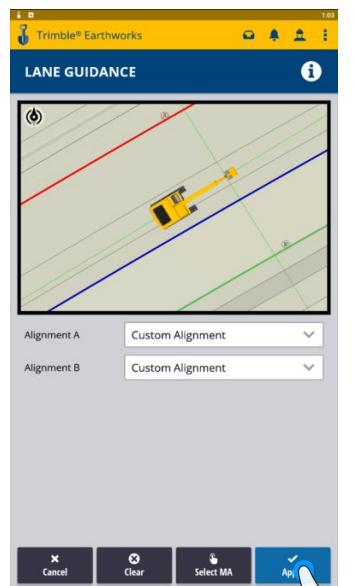
2. Touch MA



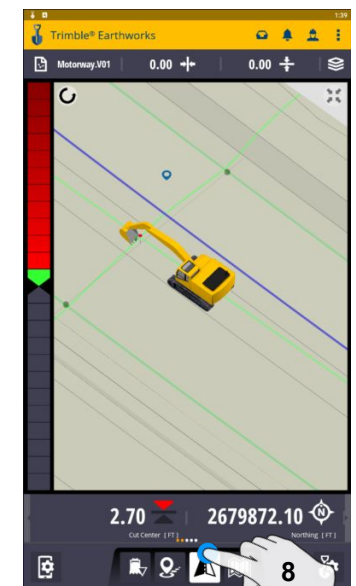
3. Select Master Alignment
4. Touch Next



5. Select line A
6. Select line B



7. Touch Apply



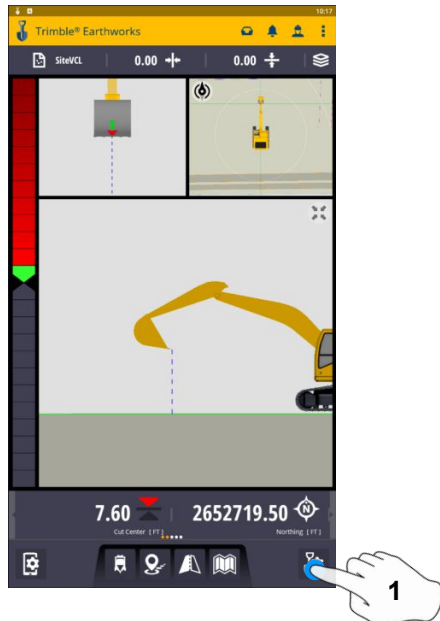
8. Touch Lane Guidance icon to stop

Note: Slope Between Alignment A and B will be projected slope

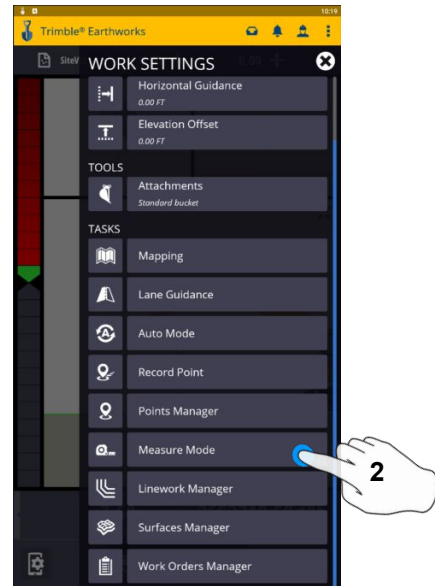
SITECH TECHNOLOGY DEALER

Field Reference Guides

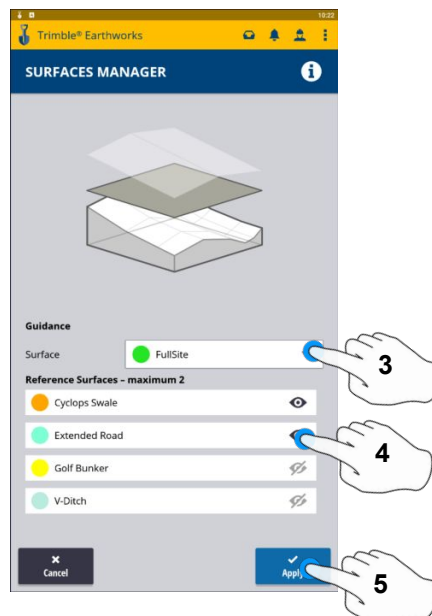
Surface Manager ** Will only work in VCL format Designs**



1. Touch Worksettings



2. Select Surface manager

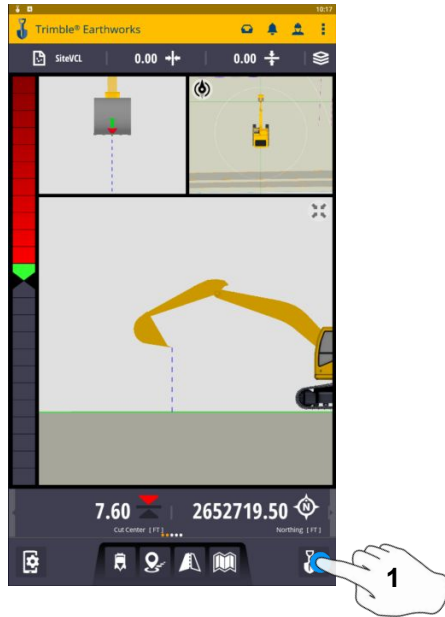


- 3. Select Surface Guidance
- 4. Select Reference Surface (Maximum of 2)
- 5. Touch Apply

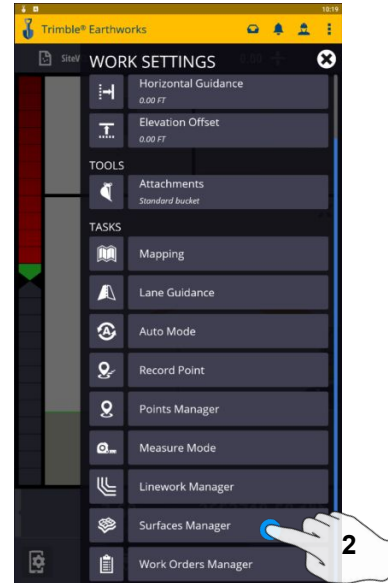
SITECH TECHNOLOGY DEALER

Field Reference Guides

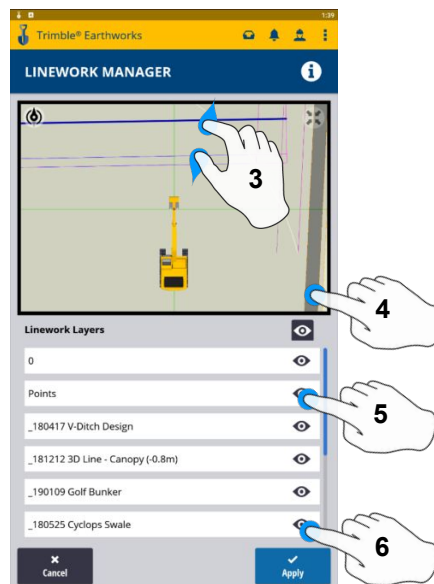
Linework Manager ** Will only work in VCL format Designs**



1. Select Worksettings



2. Select Linework manager

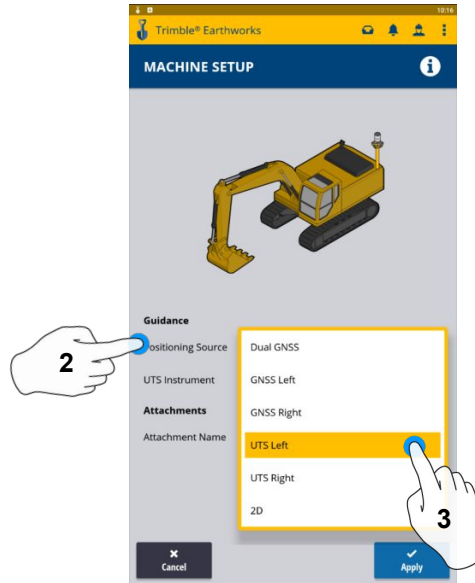


- 3. Zoom In/Out on the Design
- 4. Option to Select all Lines
- 5. Option to select individual Lines
- 6. Touch Apply

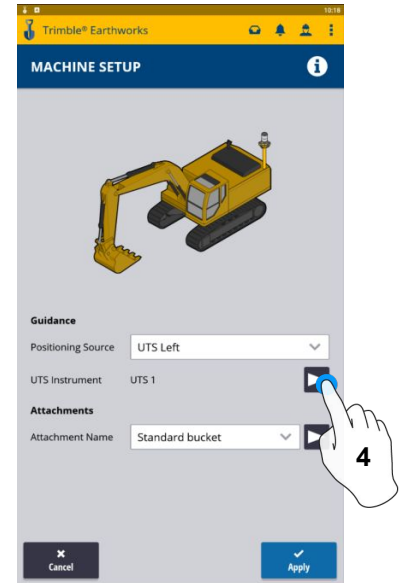
UTS Setup



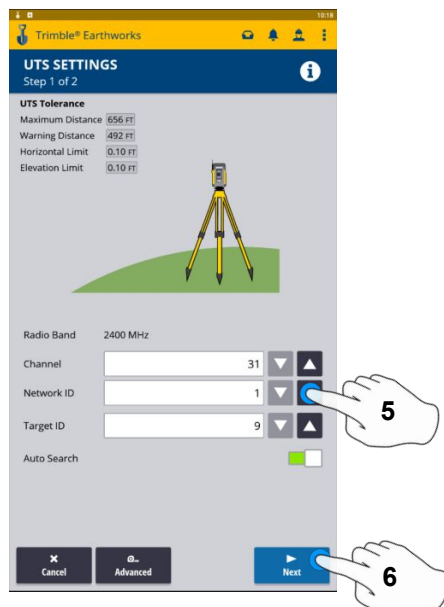
1. Touch Machine Setup



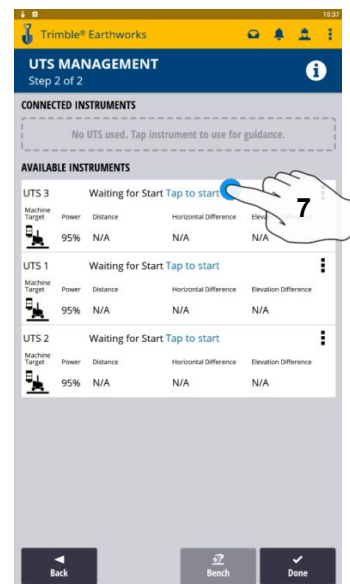
2. Touch Positioning Source
3. Touch UTS (Right or Left)



4. Touch to Edit/Add UTS

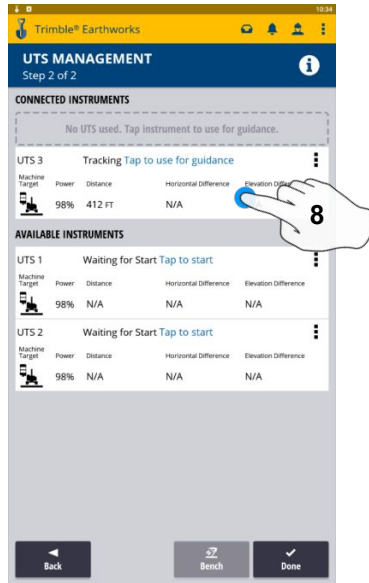


5. Select Channel/ID/Target ID
6. Touch Next

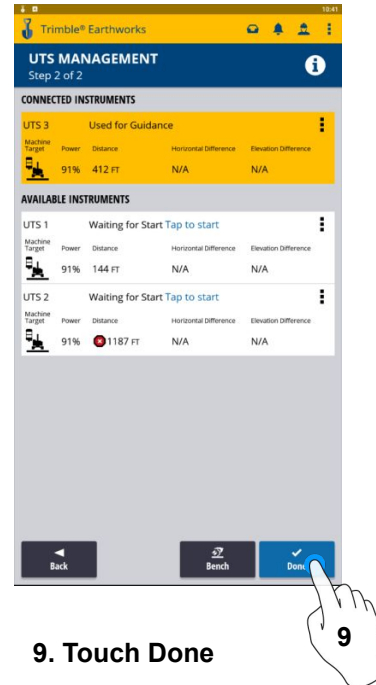


7. Tap to Start

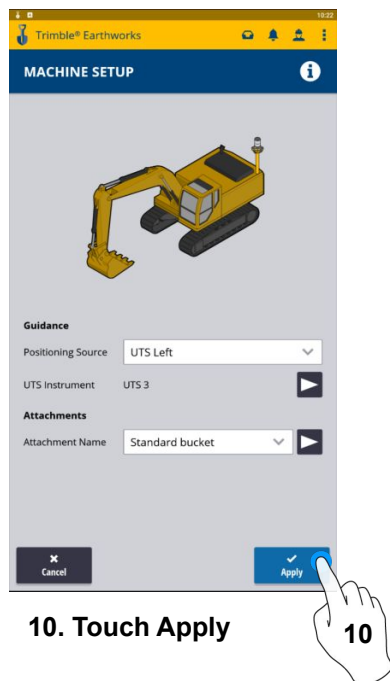
UTS Setup Cont:



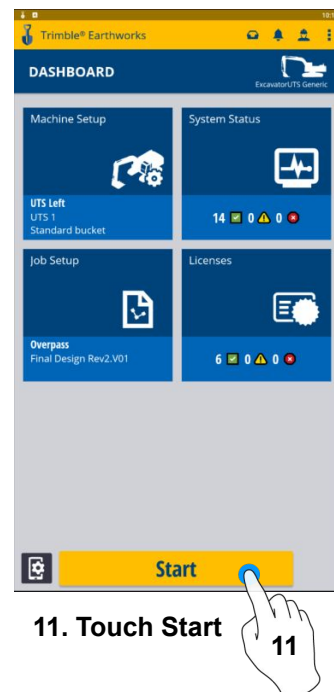
8. Tap to use for Guidance



9. Touch Done



10. Touch Apply

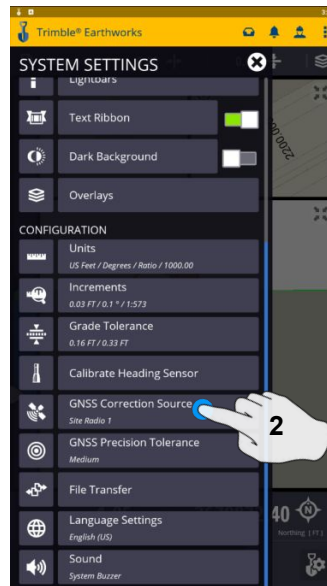


11. Touch Start

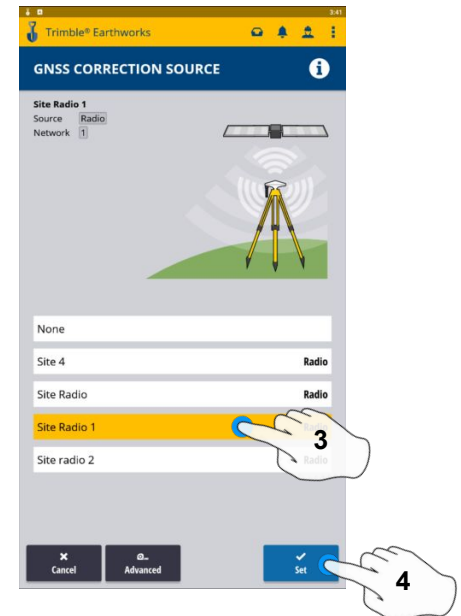
Change Radio Network



1. Touch system settings

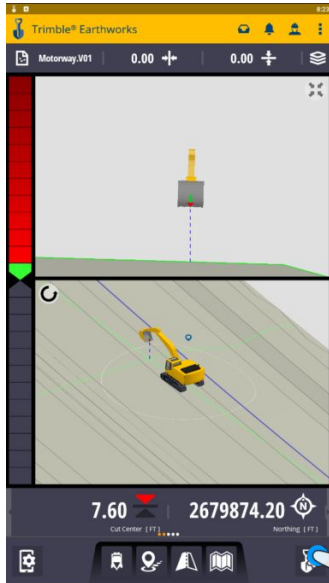


2. Touch GNSS correction source

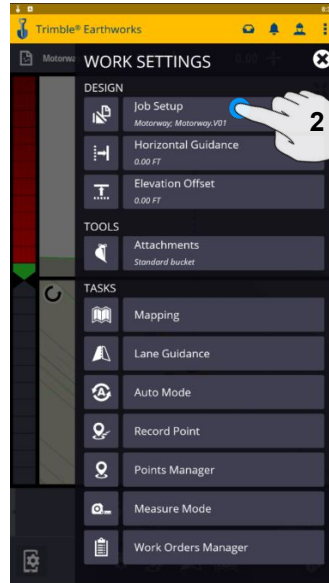


3. Touch Radio Network
4. Touch Set

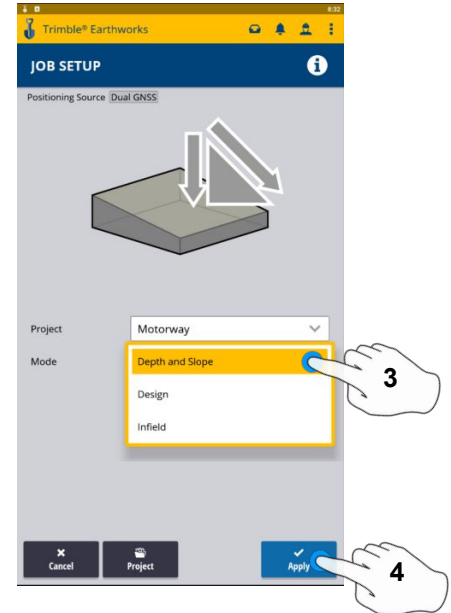
Level Surface



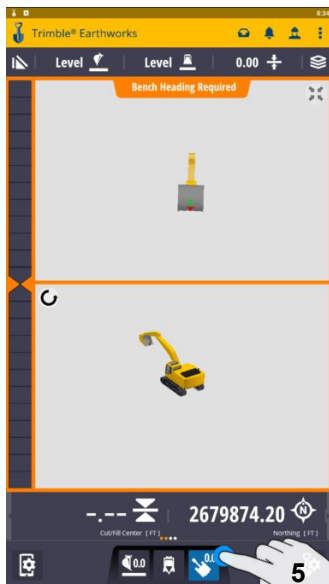
1. Touch Work Settings



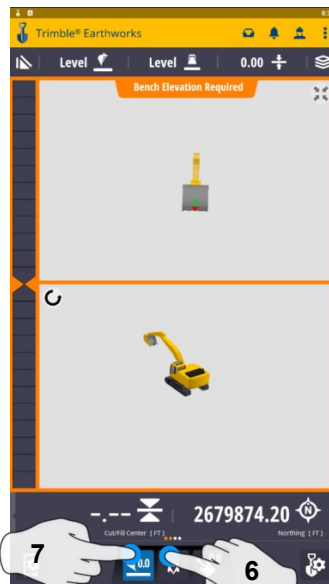
2. Touch Job setup



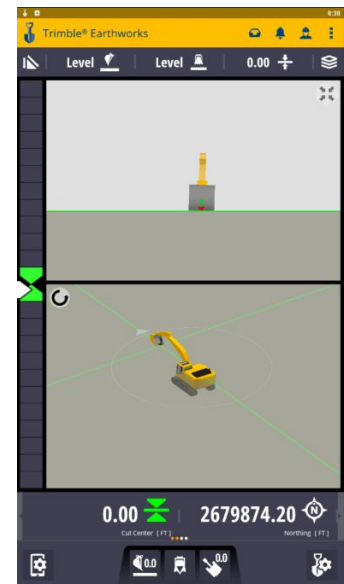
3. Touch Mode and select
Depth and Slope
4. Touch Apply



5. Touch Bench Heading

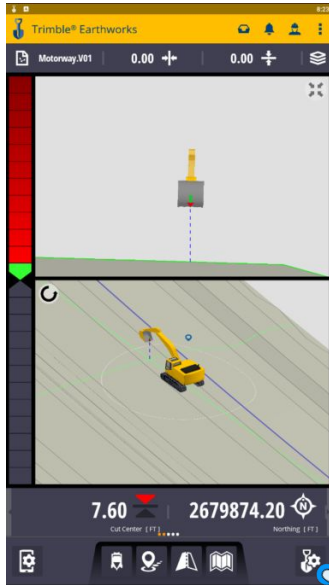


6. Select Blade Tip Focus
Point
7. Place Blade Tip at
Elevation and Touch
Bench

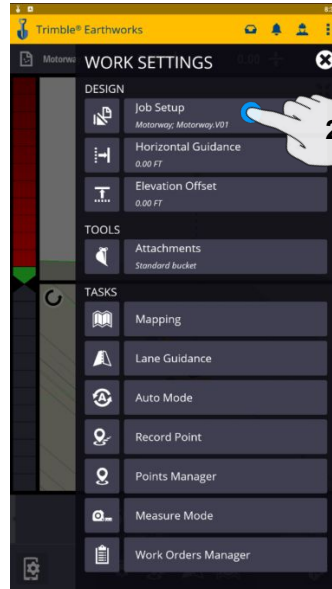


SITECH TECHNOLOGY DEALER Field Reference Guides

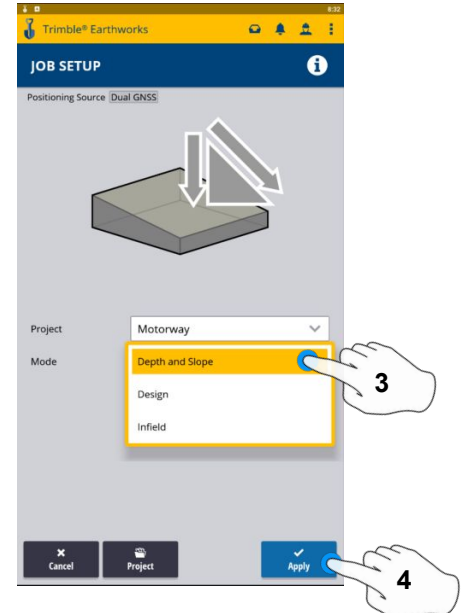
Sloping Surface



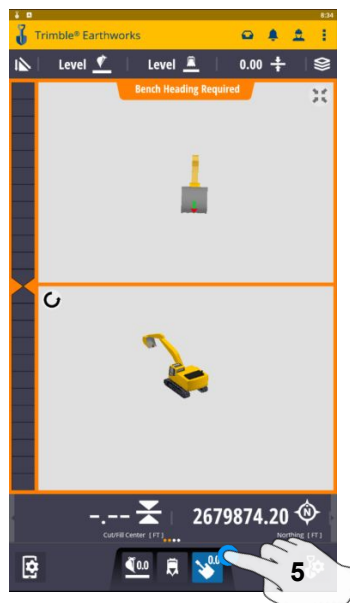
1. Touch Work Settings



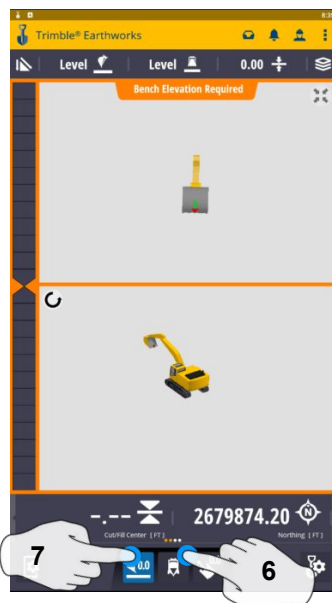
2. Touch Job setup



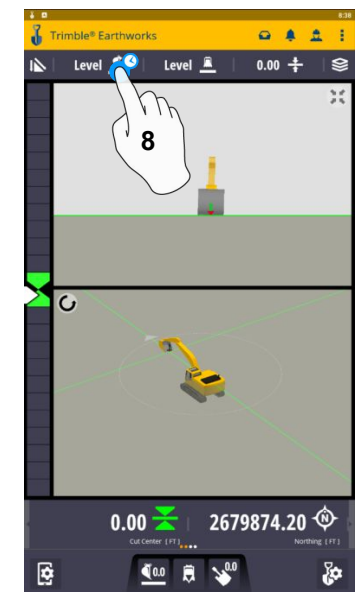
3. Touch Mode and select
Depth and Slope
4. Touch Apply



5. Touch Bench Heading



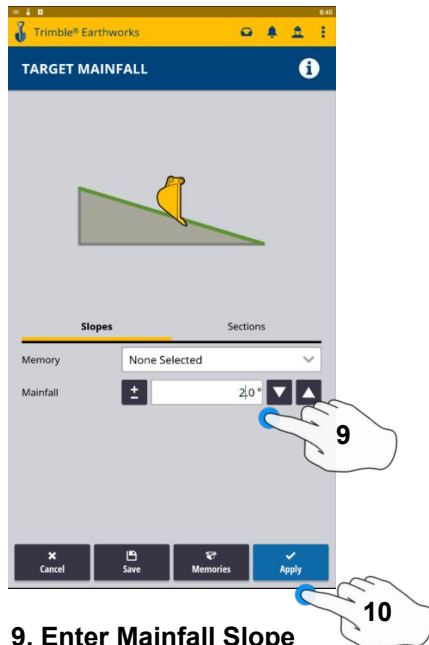
6. Select Blade Tip Focus Point
7. Place Blade Tip at
Elevation and Touch
Bench



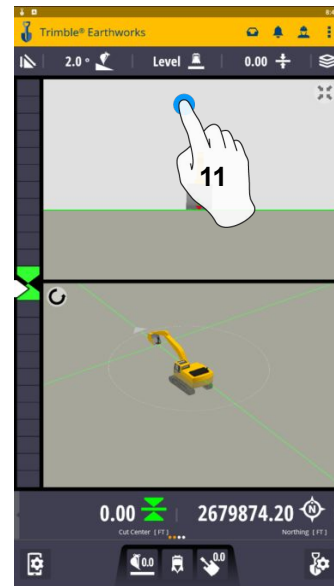
8. Touch and Hold Target Mainfall

Note: This will apply a slope parallel to the direction of heading

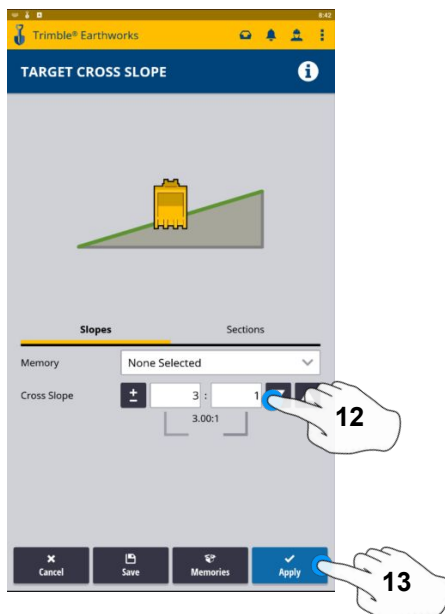
Sloping Surface Continued



9. Enter Mainfall Slope
10. Touch Apply



11. Press and Hold Cross Slope
Note: This will apply a slope perpendicular to the direction of the heading



12. Enter Cross Slope
13. Touch Apply

